

(Özel)

SABAH

Şarkısı

1937

(Özel)

Nuri Sami Koral

(Tenor solo)

Flüt, oboi, viola

Çello

- Eşliğinde -

B. 7

SABAH

Şarkısı
1937

Nuri Sami Koral

Chan
Şarkı

Moderato

Flüt

Oboi

Alto

Çello

Piáno

Handwritten musical notation on a single staff. It begins with a treble clef and a key signature of one flat. The notation includes rests and a melodic line with a triplet of eighth notes. Below the notes, the syllables "U YU YAN O" are written. The time signature changes from 5/4 to 3/4.

(Andante.)

Handwritten musical score for four staves. The top staff is vocal, with lyrics "U YU YAN O". The other three staves are for piano accompaniment. The score includes dynamic markings such as *p*, *pp*, *Rall*, and *dim*. It features a section with a 5/4 time signature and a section with a 3/4 time signature. The word "Tempo." is written above the 3/4 section. The piano part includes markings like "con sordim" and "pp".

(Andante.)

Handwritten musical score for two staves. The top staff is vocal, and the bottom staff is piano accompaniment. The score includes dynamic markings such as *p* and *pp*, and the instruction "Rall". It features a section with a 5/4 time signature and a section with a 3/4 time signature. The word "Tempo." is written above the 3/4 section. The piano part includes markings like "con sordim" and "pp".

Handwritten musical notation for the first system. The lyrics are: BA LAR DA ZÜM RÜT DEN O — YA LAR DA RÜZ GÂRLAR ES — DI. The notation includes a treble clef, a key signature of one flat (B-flat), and a 3/4 time signature. There are three triplet markings (indicated by a '3' above the notes) over the words 'ZÜM RÜT DEN O', 'YA', and 'RÜZ GÂRLAR ES'. The notes are mostly quarter and eighth notes with some slurs.

Handwritten musical notation for the second system, consisting of four staves. The top staff continues the melody from the first system, featuring a five-note scale-like passage marked with a '5' above it. The second staff shows a vocal line with slurs and a fermata. The third and fourth staves provide harmonic accompaniment with chords and moving lines. A dynamic marking 'p' (piano) is present in the third staff.

Handwritten musical notation for the third system, consisting of two staves. The top staff continues the melody, including a five-note scale-like passage marked with a '5' above it. The bottom staff provides harmonic accompaniment with chords and moving lines.

4

YER - YER - SA BA HI MUE - LU LA DI.

Poco A poco Rall

dim

mp

mp

mp senza sordina

Piu Moto.

mp senza sordim.

Piu Moto.

p

p

B. 7 - 4

Handwritten musical score for a four-part setting. The score includes staves for Soprano (S), Alto (A), Tenor (T), and Bass (B). The key signature has one flat (B-flat), and the time signature is 4/4. The music features various dynamics (p, f), articulation (accents), and phrasing (slurs). Measure 4 contains complex chordal textures with triplets and sixteenth-note patterns.

Handwritten musical score for a two-part setting. The score includes staves for Treble and Bass clefs. The key signature has one flat (B-flat), and the time signature is 4/4. The music features various dynamics (p, f), articulation (accents), and phrasing (slurs). Measure 4 contains complex chordal textures with triplets and sixteenth-note patterns.

Handwritten musical score for the first system. It consists of two staves: a treble clef staff on top and a bass clef staff on the bottom. The treble staff contains a complex melodic line with triplets, slurs, and various accidentals (sharps and flats). The bass staff contains a simpler accompaniment line. Dynamic markings include 'mp' (mezzo-piano) and 'Rall' (rallentando). There are also some handwritten notes like 'solo' and '3' above the treble staff.

Handwritten musical score for the second system. It continues the notation from the first system. The treble staff has a complex melodic line with triplets and slurs. The bass staff has a simpler accompaniment line. Dynamic markings include 'mp' and 'Rall'. There are also some handwritten notes like '3' above the treble staff.

YER YÜZÜ BİR - A ĞIZ DAN HA YA TI İ ÇER - Gi - Bi SA BA

Tempo .
mp
Tempo p
mp
pTemp
con sordini .
mp
con sordini .
mp

p
f

HI KUT LU LA DI — YA SAMAK NE TAT LI OH YA SAMAK NE TAT

poco a poco Rall

poco cresc...

poco cresc...

poco cresc...

poco a poco Rall

poco cresc...

Handwritten musical notation on a single staff, featuring a treble clef, a key signature of one flat (B-flat), and a common time signature. The notation includes a half note on the first line (F4) and a whole note on the second line (C5), with a dynamic marking of *pp* and a fermata over the whole note.

Handwritten musical score for four staves, all in treble clef and one flat key signature. The first staff has a half note on the first line (F4) with a dynamic marking of *pp*. The second staff has a half note on the second line (C5) with a dynamic marking of *pp*. The third staff has a half note on the second space (G4) with a dynamic marking of *pp*. The fourth staff has a half note on the second space (G4) with a dynamic marking of *pp*. Each staff has a fermata over the note and a double bar line at the end.

Handwritten musical score for two staves, both in treble clef and one flat key signature. The first staff has a half note on the second space (G4) with a dynamic marking of *pp*. The second staff has a half note on the second space (G4) with a dynamic marking of *pp*. Each staff has a fermata over the note and a double bar line at the end.

9

Cello

SABAH

Sarkisi
1937

(özel)

Nuri Sami Korol

Moderato.

3/4 p

Viola

SABA
Şarkısı
1937

(Özel)

Nuri Sami Koral

Moderato.

Handwritten musical score for Viola, titled "SABA" by Nuri Sami Koral. The score is written on ten staves and includes various musical notations such as notes, rests, and dynamic markings. It features tempo changes from Moderato to Andante and Piu Mota, and includes performance instructions like "Rall.", "dim.", "Tempo con sordin.", and "senza sordin.". The key signature has one flat (B-flat) and the time signature is 3/4. The score concludes with a double bar line.

FLÜT

SABAH

Şarkısı
1937

(ÖZEL)

Nuri Sami Koral

Moderato.

Handwritten musical notation for the first staff of the Moderato section. It begins with a treble clef, a key signature of one flat (B-flat), and a 3/4 time signature. The music consists of several measures with notes and rests, including a triplet of eighth notes. A dynamic marking 'p' is present.

Handwritten musical notation for the second staff of the Moderato section. It continues the melody with notes and rests. A dynamic marking 'p' is present. The staff ends with a double bar line, a 5/4 time signature, and the markings 'Rall' and 'dim'.

(Andante. (şarkı.

Handwritten musical notation for the first staff of the Andante section. It starts with a treble clef, a key signature of one flat, and a 3/4 time signature. A double bar line with repeat dots is followed by a 'Tempo' marking. The music includes notes, rests, and triplets. A dynamic marking 'p' is present.

Handwritten musical notation for the second staff of the Andante section. It continues the melody with notes and rests. A dynamic marking 'p' is present. The staff ends with a double bar line, a 'dim.' marking, and a repeat sign.

(Piu Moto.

Handwritten musical notation for the first staff of the Piu Moto section. It begins with a treble clef, a key signature of one flat, and a 4/4 time signature. The music includes notes, rests, and triplets. Dynamic markings 'mp' and 'poco A poco' are present.

Handwritten musical notation for the second staff of the Piu Moto section. It continues the melody with notes and rests. A dynamic marking 'mp' is present. The staff ends with a double bar line, a 'Rall' marking, and a 'Tempo' marking.

Handwritten musical notation for the third staff of the Piu Moto section. It continues the melody with notes and rests. A dynamic marking 'mp' is present. The staff ends with a double bar line, a 'poco enese...' marking, and a '3' marking.

Handwritten musical notation for the fourth staff of the Piu Moto section. It continues the melody with notes and rests. A dynamic marking 'pp' is present. The staff ends with a double bar line, a 'poco A poco Rall' marking, and a 'pp' marking.

Oboi

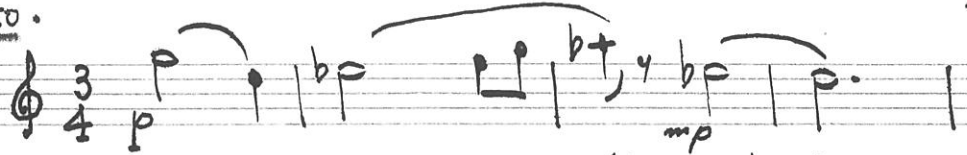
SABAH

ŞARKISI
1937

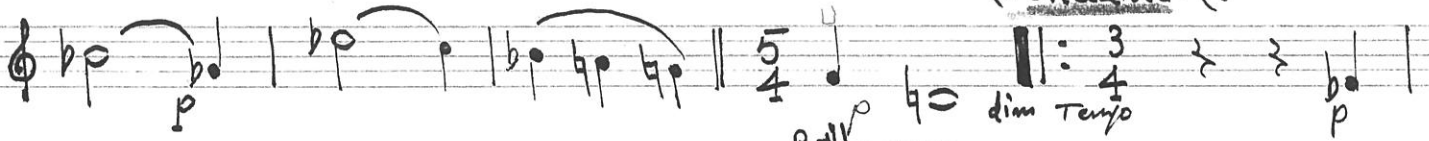
(ÖZEL)

Nuri Sami Koral

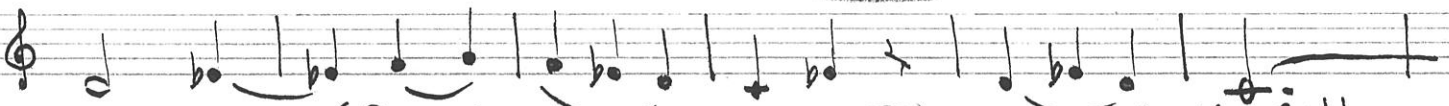
Moderato.



(Andante. Şarkı.)

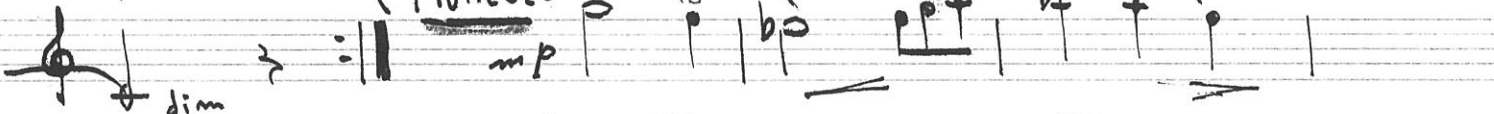


Rall ...



(Piu Moto)

Poco A Poco Rall



(Solo)

