

Milli Kütüphane

1979 NOTA 47

Nu. 12-11

DN 3155

(14. dakika)

Bu eser ilk defa Cumhurbaşkanlığı
Senfoni Orkestrası tarafından
Şef. Dr. Ernst Praetorius
idareesinde, 1943 yılında
Ankara'da çalınmıştır.

daha sonraki
şef. F. ANAR .

4 Fauber
5 Gergesco (Bükras Radyosu
Tekrar Dr. Praetorius ve Bükras Radyo
Orkestrasında şef. ~~ve~~ Gergesco

İKİ TÜRKÜ

(1941)

Orkestra

için

A - Kızların Türküsü

B - Eşe Türküsü

NURİ SAMİ

Not:

Bu eser 1941 de. Cumhurbaşkanlığı orkestrası hesabına
satın alınmıştır. Aynı Cumhurbaşkanlığı tarafından dinlenmiş
ve bilizak tahnid görmüştür.

(N.S.)

INSTRUMENTS

2 - Flutes

2 - oboi

cor Anglais

2 - clarinettes (sib)

2 - Fagot

3 - Corne (Fa)

2 - Trompettes (ut)

2 - Trombones

1 - Tuba

Timbales

Triangolo

Tambour de Basque

« Darbuka » (instrument Turque)

Gr. Geste

Cymbale

1 - Harp

celesta

Quintette A cordes

(9. dakika)

«Kırların Türküsü»

Adagio - (♩ = 60)

1941

Nuri Sami

2-Fl. : C

2-ob. : C

C-A. : C

2-cl. (sib) : C

2-Fg : C

1-2 3-Hr. (F#) : C

2-Trpt. (E♭) : C

2-Trbn : C

Tuba : C

Timpani (F#-D) : C

Hrp. : C

Viol. I : C

Viol. II : C

Alto : C

Cello : C

Bass : C

leg. Espressivo dim

p leg.

sf sfz p p p p simili

Molto Espressivo

gliss.

f

Handwritten musical score for a symphony orchestra, page 2. The score includes parts for Flute (Fl.), Cor (Cor.), Timpani (Tim), Celesta (Celes.), English Horn (Engl.), Harp (Hrp), Violin I (viol. I), Violin II (viol. II), First Trumpet (1. Pult. Alto), Second Trumpet (2. Pult.), First Trombone (I. Pult. Cello), Second Trombone (2. Pult.), and Double Bass (K.B.).

The score features complex rhythmic patterns, including triplets and sixteenth-note runs. Dynamic markings such as *dim* (diminuendo) and *Furioso* (furious) are present. The Harp part includes a section marked *Furioso* with a *rit.* (ritardando) marking. The string parts (Violins, Trombones, and Double Basses) also feature *Furioso* markings and dense, rhythmic textures.

viol. I
 viol. II
 Alt.
 Cello
 K-B.
 Hrs.

dim
dim
Rall
Rall
Rall

Tranquillo (♩ = 60)

Cl.
 Fg.
 Cor.
 Hrr.

soff
pes pressi
pp
ans sord.
pp
sordin
dim
dim

Tranquillo (♩ = 60)

Viol. I
 Viol. II
 Alt.
 Cello
 K-B.

pp
pp
pp
pp
pp
pp
dim
dim

(♩ = 88)
Poco Accel.

Fl. *Piu Animato* *Giacoso*

Ob. *Piu Animato* *Poco Accel.*

C.A.

Cl.

Fg. *Giacoso*

Cor.

Trpt. *mf*

Trb. *mf*

Tub. *mf*

Tin. *mf* *Poco Accel.*

Hrp. *Poco Accel.*

Viol. I *Piu Animato* *Giacoso*

Viol. II *Piu Animato*

Alt. *Poco Accel.*

Cell. *Giacoso*

K. B.

FL-
ob.
c.A.
cl.
Fg.
Cor
Trpt
Trb-
Trb-
Tun

This section of the score covers woodwinds and brass instruments. The Flute (FL) part features a complex sixteenth-note passage with a '6' above it. The Oboe (ob.) and Clarinet (cl.) parts have similar rhythmic patterns. The Bassoon (Fg.) part has a melodic line with slurs. The Cor Anglais (Cor) and Trumpet (Trpt) parts have chords and melodic fragments. The Trombone (Trb-) and Tuba (Tub-) parts have sustained notes, with the Tuba part marked 'pp'. The Tuba part also has a '6' above it. The Tuba part has a '6' above it.

Hrp.
Viol. I
Viol. II
Alb.
Cell
K. B.

This section of the score covers strings and harp. The Harp (Hrp.) part has a tremolo effect. The Violin I (Viol. I) part starts with a 'cresc.' marking and has a '6' above it. The Violin II (Viol. II) part has a '5' above it. The Viola (Alb.) part has a '6' above it. The Cello (Cell) and Double Bass (K. B.) parts have melodic lines with slurs. The Cello part has a '6' above it. The Double Bass part has a '6' above it.

Empty musical staves for additional instruments, including parts for Violin I, Violin II, Viola, Cello, and Double Bass.

FL-
ob.
C.A.
cl.
Fg.
Cor.
Trpt.
Tub.
Tub.
Tim

Handwritten musical score for woodwinds and brass instruments. The staves are labeled: FL- (Flute), ob. (Oboe), C.A. (Cor Anglais), cl. (Clarinet), Fg. (Bassoon), Cor. (Cor Anglais), Trpt. (Trumpet), Tub. (Trombone), Tub. (Trombone), and Tim (Timpani). The music features various melodic lines with slurs and dynamic markings such as *pp* and *ppp*. There are also some handwritten annotations like "Cresc." and "pp".

Hrp.

Handwritten musical score for Harp (Hrp.). The music consists of a single melodic line with slurs and dynamic markings like *p* and *con gusto*.

Handwritten musical score for piano accompaniment, showing the right and left hand parts. It includes chords, arpeggios, and melodic fragments. Dynamic markings like *cresc.* are present.

Five empty musical staves at the bottom of the page, likely reserved for other instruments or a second system.

Fl.

ob. *crese.*

cl. *solo*

Fig.

Cor.

Trpt.

Trb.

Tub.

Tim.

Hrp.

Viol. I

Viol. II

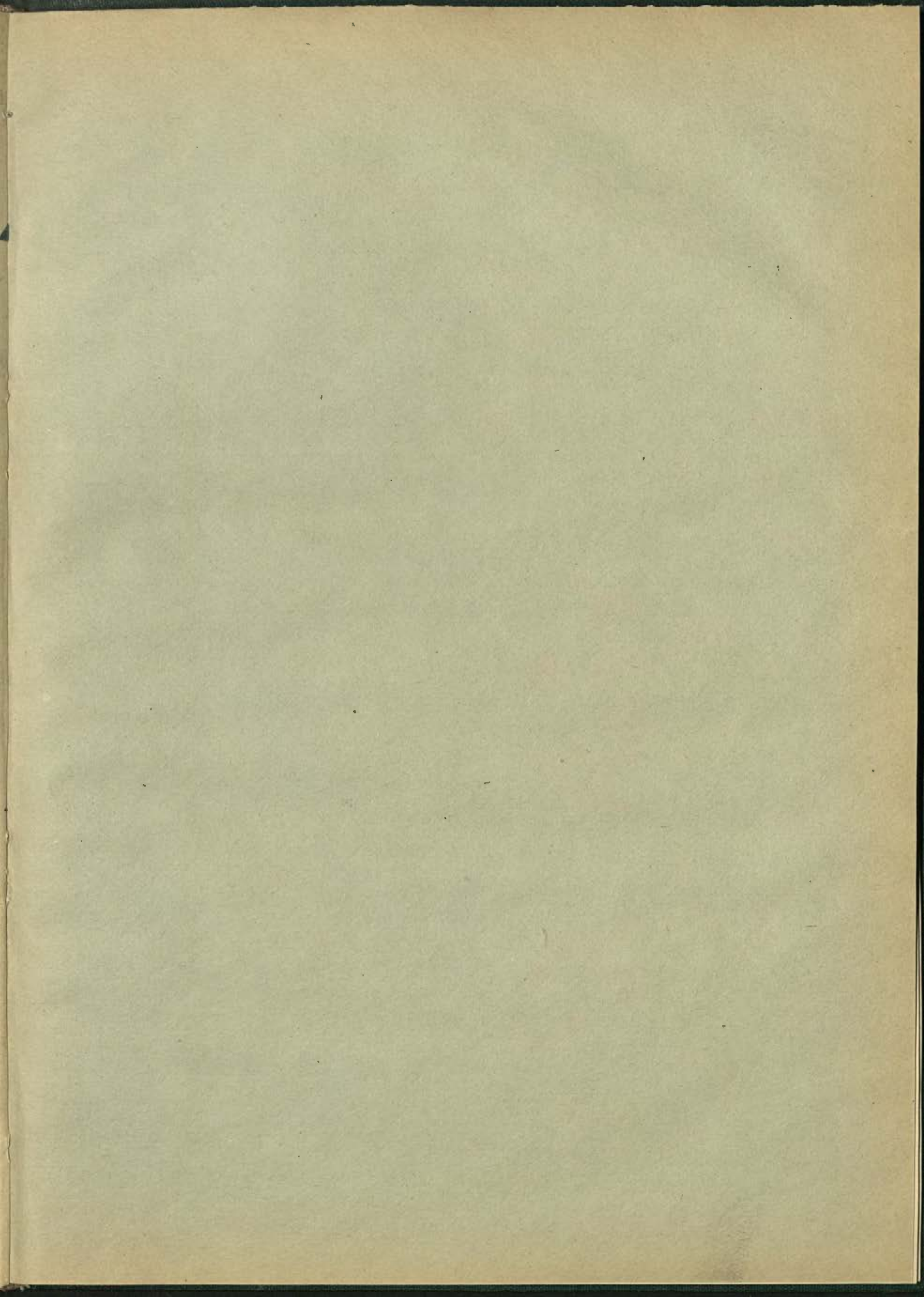
Alt.

Cell.

K.B.

This page of a handwritten musical score, numbered 8, contains staves for various instruments. The woodwind section includes Flute (Fl.), Oboe (ob.), Clarinet (cl.), and Bassoon (Fig.). The brass section includes Cor (Cor), Trumpet (Trpt), Trombone (Trb.), and Tuba (Tub). Percussion includes Timpani (Tim). The harp (Hrp.) is also present. The string section includes Violin I (Viol. I), Violin II (Viol. II), Alto (Alt), Cello (Cell.), and Double Bass (K.B.). The score features complex rhythmic patterns, including sixteenth and thirty-second notes, and is marked with dynamics like 'crese.' and 'solo'. The notation is in a single system with multiple staves.

Five empty musical staves are located at the bottom of the page, below the string section staves.



Tranquillo

FL. —

ob. —

c-A —

cl. —

Fig. —

cor. —

Trpt. *pp* —

Trb. —

Tub. —

Tm. *p* —

Celes. *Trgl.*

Hrp. *Un poco Accel.*

Viol. I *poco a poco cresc.*

Viol. II *divi*

Alt. *divi*

cell. *Pizz*

A.B. *Pizz*

pp *con Sord.*

pp *Sord.*

Trgl.

Un poco Accel.

Un poco Accel.

divi

divi

Pizz

Pizz

(3)

FL.

ob.

C.A.

Cl.

Fg.

cor.

Trpt.

Trbn.

Tub.

Tim.

Cellos

Hrp.

Violins

Violas

Celli

Double Basses

Handwritten musical score for a symphony orchestra. The score is arranged in systems. The woodwind section includes Flute (FL.), Oboe (ob.), Cor Anglais (C.A.), Clarinet (Cl.), Bassoon (Fg.), and Cor Anglais (cor.). The brass section includes Trumpet (Trpt.), Trombone (Trbn.), and Tuba (Tub.). The percussion section includes Timpani (Tim.). The string section includes Cellos (Cellos), Harp (Hrp.), Violins, Violas, Celli, and Double Basses. The score features various musical notations, including notes, rests, and dynamic markings such as *consord*, *poco*, *dim*, *trgl.*, *pizz*, and *polt. I*. There are also some handwritten annotations like "8-767" and "3-". The score is divided into measures by vertical bar lines, and the time signature is 4/4.

Handwritten musical score for woodwinds and percussion. The staves are labeled on the left as follows: Fl., Ob., C.A., Cl., Fg., Cor., Trpt., Trb., Tob., and Tim. The notation includes complex rhythmic patterns, dynamic markings such as $\frac{1}{2}$, $\frac{3}{4}$, and $\frac{3}{8}$, and articulation marks. A *cresc.* marking is present under the Timpani staff. The woodwinds play dense, textured passages, while the percussion provides a rhythmic accompaniment.

Handwritten musical score for Harp. The staff is labeled "Hrp." on the left. The notation shows a melodic line with some grace notes and a dynamic marking of $\frac{1}{2}$.

Handwritten musical score for strings. The staves are labeled on the left as follows: Viol. I, Viol. II, Alb., Viol. III, Cello, and V.B. The notation includes complex rhythmic patterns, dynamic markings such as $\frac{1}{2}$, $\frac{3}{4}$, and $\frac{3}{8}$, and articulation marks. The strings play dense, textured passages, with some staccato markings.

Empty musical staves at the bottom of the page, consisting of ten blank staves.

Handwritten musical score for the first system, featuring staves for Flute (Fl.), Oboe (ob.), Clarinet in A (cl. A), Clarinet in Bb (cl. Bb), Bassoon (Fg.), Harp (Hrp.), Trumpet (Trot.), Trombone (Trb.), Tubistone (Tub.), and Timpani (Tim.).

The Flute part begins with a five-measure rest, indicated by a bracket with the number '5' above it. The Oboe and Clarinet in A parts have melodic lines with slurs and accents. The Clarinet in Bb part features a complex six-measure rest, also indicated by a bracket with the number '6' above it. The Bassoon part has a melodic line with slurs and accents. The Harp part has a melodic line with slurs and accents. The Trumpet, Trombone, Tubistone, and Timpani parts are mostly silent, indicated by horizontal lines.

Handwritten musical score for the second system, featuring staves for Harp (Hrp.), Clarinet in A (cl. A), Clarinet in Bb (cl. Bb), Bassoon (Fg.), and Piano (P).

The Harp part has a melodic line with slurs and accents. The Clarinet in A part has a melodic line with slurs and accents. The Clarinet in Bb part has a melodic line with slurs and accents. The Bassoon part has a melodic line with slurs and accents. The Piano part has a melodic line with slurs and accents. The word "cresc." is written below the Piano staff.

Handwritten musical score for the third system, featuring staves for Clarinet in A (cl. A), Clarinet in Bb (cl. Bb), Bassoon (Fg.), and Piano (P).

The Clarinet in A part has a melodic line with slurs and accents. The Clarinet in Bb part has a melodic line with slurs and accents. The Bassoon part has a melodic line with slurs and accents. The Piano part has a melodic line with slurs and accents. The word "cresc." is written below the Piano staff.

Fl.
ob.
c-A.
cl.
Fg.
Cor
Tret
Tub.
Tob.
Tim
Harp.

Rit.

Rit.

divi

PPP

PPP

Rit.

Rit.

Rit.

Tempo

Fl. *Tempo*

ob. *P Espress.* *Poco A poco*

e.A.

cl.

Fig. *P Espress.* *Poco A poco*

Cor

Trot.

Trb.

Tub.

Tim. *Poco A poco cresc.* *Rit.*

Celes.

Hrp.

Viol. I *Tempo* *Poco A poco* *cresc.* *Rit.*

Viol. II *Tempo* *Poco A poco* *cresc.* *Rit.*

Prnt. I

Alt. *cresc.* *Rit.*

Prnt. II

Cello *cresc.* *Rit.*

2-3-4

K.B. *cresc.*

(4) (♩ = 80)

Fl. *Tempo*

ob. *Tempo*

cl. *Tempo*

pp. *Tempo*

Cor. *f*

Trpt. *f*

Trb. *f*

Tob. *f*

Tim. *f*

Harp. *Tempo*

(♩ = 80)

Viol. I

Viol. II

Viol. III

Viol. IV

Cell. I

Cell. II

W.B.

f *Tempo*

(♩ = 72)

FL-
ob-
c-A-
cl
Fag
Cor-
Trpt
Trb-
Tub
Tm

Handwritten musical notation for woodwind and percussion instruments. The staves are mostly empty, with some initial notes and rests. The instruments listed are Flute (FL-), Oboe (ob-), Clarinet in A (c-A-), Clarinet (cl), Bassoon (Fag), Cor Anglais (Cor-), Trumpet (Trpt), Trombone (Trb-), Tuba (Tub), and Timpani (Tm).

Hrp.

Handwritten musical notation for the Harp (Hrp.). It features a series of notes with a slur and a 'gliss.' marking, indicating a glissando effect.

(♩ = 72)

Viol. I
Viol. II
{ Polt. I
Alc.
2.3.4
Pnt. I
Cello
2.3.4
K. B.

Handwritten musical notation for the string section. It includes staves for Violin I (Viol. I), Violin II (Viol. II), Polka I (Polt. I), Alto (Alc.), Posauna I (Pnt. I), Cello (Cello), and Double Bass (K. B.). The notation includes various notes, rests, and dynamic markings such as 'dim' and 'ritard.'.

Ritard.

FL
ob
E-A
cl.
Fg
Cor
Trp
Tub.
Tim

Musical staves for woodwinds and percussion. The staves are labeled: FL (Flute), ob (Oboe), E-A (English Horn), cl. (Clarinet), Fg (Fagot), Cor (Cor Anglais), Trp (Trumpet), Tub. (Tuba), and Tim (Timpani). Most of these staves contain rests, indicating they are silent during this section.

Celes
Hrp.
ALT
cell.
K. B.

Musical staves for strings and celesta. The staves are labeled: Celes (Celesta), Hrp. (Harp), ALT (Alto), cell. (Cello), and K. B. (Kontrabaß). The celesta part features a complex melodic line with many notes and slurs. The harp part shows chordal accompaniment. The string parts (ALT, cell., K. B.) have fewer notes, with some slurs and dynamics like *pp*.

ALT
celes

Musical staves for alto and celesta. The staves are labeled: ALT (Alto) and celes (Celesta). The alto part has a few notes and a *rit* (ritardando) marking. The celesta part continues with melodic lines and includes a *dim* (diminuendo) marking and another *rit* marking.

(♩ = 92)

FL. *ffz*

ob. *ffz*

C-A

Cl. *ffz*

Fig. *Tempo*

Alt. *ppp Tempo*

cello *ppp*

K.B. *ppp*

5
(♩ = 84)

FL.

ob.

cl.

Fig. *dim*

Viol. II *Rall*

cell. *Rall*

K.B. *Rall*

Tempo

Tempo

Tempo Leg.

(♩ = 84)

Viol. I *leg*

Viol. II *dim*

Alt. *B Leg.*

dim

Fl. (2) solo
ob. *ad lib*
cl. (1)
Fag. *pp*
Cor.
Trpt.
Tob.
Tob.
Tim.
Hrp.

tranquilla
Viol. I *pp molto leg*
Viol. II *pp*
Alt. *pp*
Cell. *pp molto leg*
K. B. *p pizz*

Fl.
ob.
c.-A.
Cl.
Fg.
Cor
Tub.
Viol. I
Viol. II
Alt.
Cello
K.B.

Cl.
Fg.
Cor
Trb.
Tub.
Hrp.
K.B.

6. Tranquillo
(♩ = 60)

Musical score for woodwinds and percussion. Instruments listed on the left: Fl., Ob., Cor. A., Cl., Fg., Cor., Trpt., Trbn., Tuba, Tim., Trgl., Hrp.

Tempo markings: *Tempo*, *mf*, *f*, *p*.

Rehearsal mark 4 is present in the Trgl. part.

Tempo marking (♩ = 60) is repeated below the percussion section.

Musical score for strings. Instruments listed on the left: Viol. I, Viol. II, Alt., Cell., K.B.

Tempo markings: *Tempo*, *f*, *dolce*.

Handwritten musical score for a symphony orchestra. The score is written on multiple staves, with instrument abbreviations on the left side. The notation includes notes, rests, and dynamic markings.

Instrument List (Left Side):
 Fl. (Flute)
 Ob. (Oboe)
 Cl. (Clarinet)
 Fg. (Fagott)
 Cor. (Corni)
 Trpt. (Trumpets)
 Trbn. (Trombones)
 Tim. (Timpani)
 Celest. (Celesta)
 Hrp. (Harp)
 Viol. I (Violin I)
 Viol. II (Violin II)
 Alt. (Alto)
 Cell. (Cello)
 K. o. (Kontrabaß)

Key Features:
 - A large section of the score is marked with a double bar line and a fermata-like symbol, indicating a section of music that is not to be performed.
 - The woodwind and string parts contain complex rhythmic and melodic lines.
 - The Harp part features a prominent arpeggiated figure with a dynamic marking of *ff* (fortissimo).
 - The top right of the page contains the handwritten instruction: *(dov) ad libi... Acceler. impreso Rit.*

(♩ = 100)
PiuMoto

(♩ = 80)

Fl.
ob.
E.A.
cl.
Fag.
Cor
Tpt
Tpb.
Tub.
Tim
Hrp.
Viol. I
Viol. II
Alt.
coll.
K.B.

PiuMoto (♩ = 100) *ff*

(♩ = 80) *ff*

Handwritten musical score for a symphony orchestra, page 24. The score is divided into three systems. The instruments listed on the left are: Flute (Fl.), Clarinet in B-flat (Cl. Bb), Clarinet in A (Cl. A), Bassoon (Fg.), Cor Anglais (Cor), Trumpet (Trpt), Trombone (Trb.), Tuba (Tub.), Euphonium (Eup.), Horns (Hr.), Violin I (Viol. I), Violin II (Viol. II), Alto (Alt.), Cello (Cell.), and Double Bass (K.B.).

The first system includes woodwinds, brass, and strings. The woodwinds and brass parts feature complex rhythmic patterns with triplets and sixteenth notes. The strings play a steady accompaniment. The second system continues the woodwind and brass parts, with the strings playing a more active role. The third system features a prominent horn part with a melodic line, while the woodwinds and brass play supporting parts. The word "Rall." is written above the horn part in the third system. The score concludes with a double bar line and repeat signs.

Rall.

Rall

Rall

Rall

Rall

Rall

Rall

